



Craftsman Brick & Shake Beauty in River Story on Lot 15



2950 Halcyon Lane, Suite 203 Jacksonville, Florida 32223 www.arhomesjax.com Office: 904-268-1102 Fax: 904-268-1105

CBC1250866

Luxury Interiors

- Hardwood Floors
- Custom Crown moldings
- Custom Arrival Cabinet in Mud Room
- Custom Built-Ins in Great Room with Coffered Ceiling
- Bonus Room Cathedral Beamed Ceiling
- Oversize Laundry Room w/custom cabinetry and in-wall ironing board
- Extensive Low Voltage package
- Benjamin Moore® Paints

Kitchen

- Chef's Kitchen with Thermador® Appliances
- White Designers Choice Maple Cabinets and Cambria® Countertops
- Kohler® Stainless Farmhouse Sink
- Oversized Island with Built-in Wine Cooler
- Hidden Pantry with space for auxiliary refrigerator
- Pot Filler at Cooktop

Bathrooms

- Ceramic Tile in All Baths
- White Designers Choice Maple Cabinets
- Cambria® Countertops in Master, Granite in other Baths
- Freestanding Soaker Tub in Master
- Frameless Glass Shower Enclosure in Master & Bath 4
- Kohler® Tubs in other baths
- Moen® Brantford Fixtures

Detailed Exteriors

- Painted Brick and Nichiha Premium Shake™ Siding
- 3 car side entry garage
- Board and Batten shutters
- Benjamin Moore® Paints

Outdoor Living

- One acre lot
- Large front and rear porches with tongue & groove stained ceilings
- Summer Kitchen with Built-In 30" DCS Gas Grill and Stainless Steel 24" Beverage Center
- Professionally Landscaped with Automatic Irrigation System

Energy Efficiency

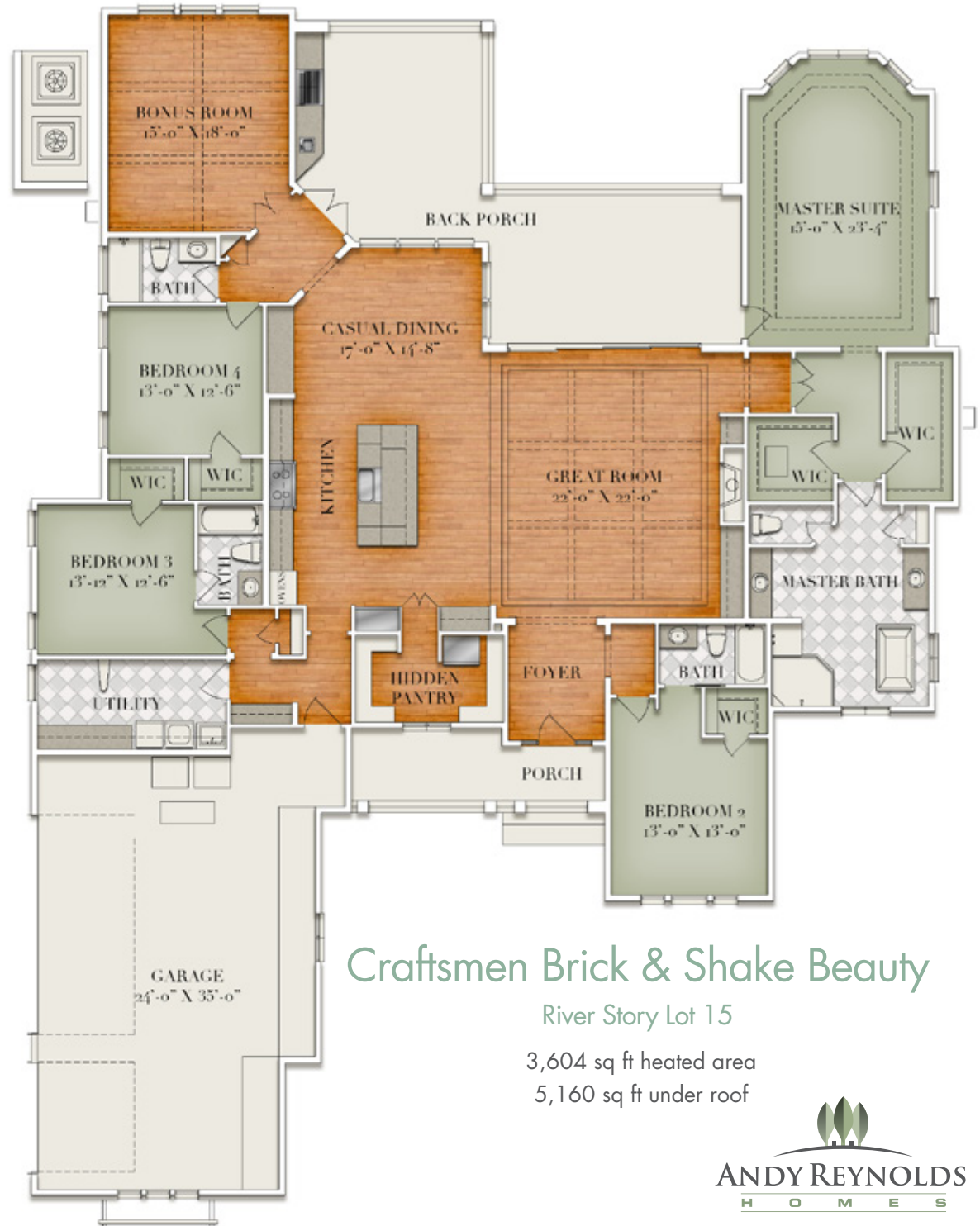
- Carrier® 16 Seer Variable Speed Air Conditioning
- Programmable Thermostats
- Rinnai® Tankless Water Heaters
- Windows and doors w/Low-E glass
- Open Cell Spray Foam Insulation at roof deck
- ZIP System™ Building Enclosure

Community Features

- Riverfront setting
- Gated Entrance
- Large lots with century-old oaks

Builder Benefits

- Designer Assisted Selections Process
- Over 40 years experience building custom homes in Northeast Florida
- BuilderTrend's cloud-based Construction Management app employed to manage all aspects of construction and communication



Craftsmen Brick & Shake Beauty

River Story Lot 15

3,604 sq ft heated area

5,160 sq ft under roof

